

**matt  
black**

The matt black finish of our Signature range is a must have.

Our electroplated matt black finish provides a true black compared to an oil brush finish.

Manufactured to exacting specifications, Pivotech's Signature range features the highest standard of components and flawless finishes.

Extensive testing of the Signature hinge resulted in a rating of 40kg per pair. Refer to the technical manual for further details.

## Hinges



SGH135BK

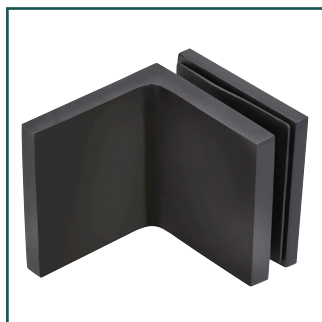


SGH180BK



SGHWTGBK

## Brackets and Support Braces



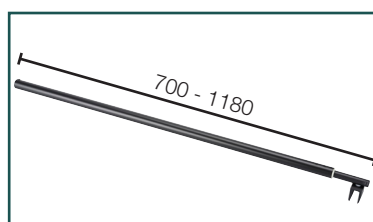
SGBCSBK



PGSBSBK



PGSB240BK



PGSBW700BK

## Knobs & Handles



PGFP43BK



PGFPMSBK



PGPH21CBK

## Hinges



SGH135SB



SGH180SB



SGHWTGSB

**chrome**

## Brackets and Support Braces



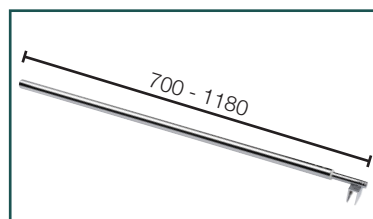
SGBCSSB



PGSBSSB



PGSB240SB



PGSBW700SB

Manufactured to exacting specifications, Pivotech's Signature range features the best quality brass, the highest standard of components and impeccable finishes.

Extensive testing of the Signature hinge resulted in a rating of 40kg per pair. Refer to the technical manual for further details.

Every component, from the grub screws to the springs, has been specifically designed to ensure the final product is the best it can be.

## Knobs & Handles



PGFP43RSB



PGFPMSSB



PGPH21CSB

**satin  
chrome**

Manufactured to exacting specifications, Pivotech's Signature range features the best quality brass, the highest standard of components and impeccable finishes.

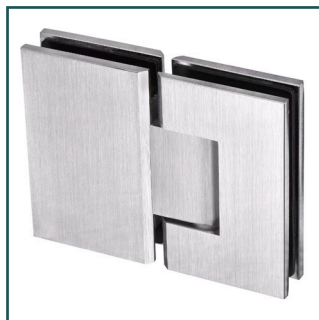
Extensive testing of the Signature hinge resulted in a rating of 40kg per pair. Refer to the technical manual for further details.

Satin chrome delivers a clean, contemporary look, while being lower maintenance than highly polished finishes. It resists water-marks and fingerprints.

## Hinges



SGH135SC

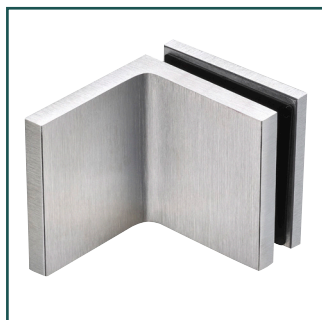


SGH180SC



SGHWTGSC

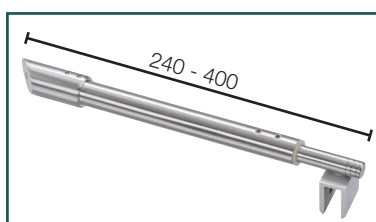
## Brackets and Support Braces



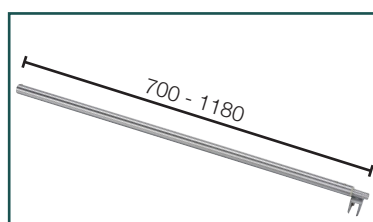
SGBCSSC



PGSBSSC



PGSB240SC



PGSBW700SC

## Knobs & Handles



PGFP43RSC



PGFPMSSC



PGPH21CSC

## Hinges



SGH135GB



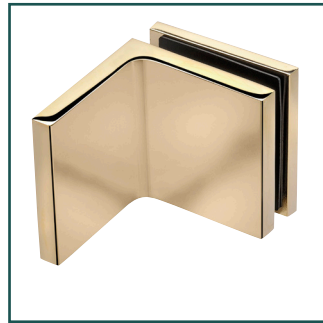
SGH180GB



SGHWTGB

**gold**

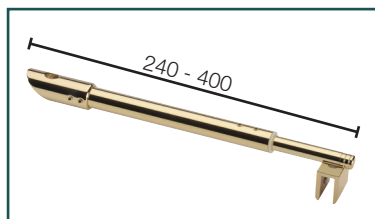
## Brackets and Support Braces



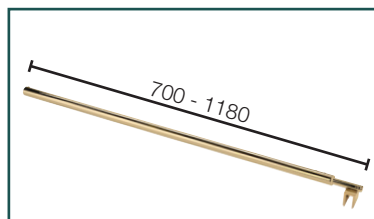
SGBCSGB



PGSBSGB



PGSB240GB



PGSBW700GB

Quality control delivers consistency of finish across the Signature range of gold components.

From construction of the hinge to attention to detail with the finishing, every facet of Pivotech's Signature glass hardware has been considered.

Extensive testing of the Signature hinge resulted in a rating of 40kg per pair. Refer to the technical manual for further details.

## Knobs & Handles



PGFP43RGB



PGFPMSGGB



PGPH21CGB